

Jonathan K. Kern Co.

March 19, 2012

Cents



100%

1802 S-225 very pleasing raw VF 30 or better, smooth brown surfaces with two tone highlights \$677.

1803 S-256 large cent VF 30 detail, old light clng, nice obverse, big pits on rev \$177. On sale



100%

1837 copper hard times HT 69 Obv: Andrew Jackson in bank strongbox with sword and coins Rev: his experiment shipwrecking NGC MS 64 brown \$497.



100%

1837 Feuchtwanger Cent, private pattern or essai, raw MS 63 lustrous, better than average planchet, usual lack of detail in high spots. Very pleasing \$775. Another raw, very pleasing VF \$287.

1851 perfect orig VF35 \$42.

1857 flying eagle Fine \$39. Pleasing Good 6 \$27.

1857 flyer die clashed with Lib std half die, net Fine \$67.



100%

1858 sm let NGC MS 63+ \$1477. nice orig F15 \$49.

1858 lg let nice orig Fine \$39.

1861 VF 30 \$67.

1863 Civil War Patriotic token Obv: Douglas Rev: very artistic half figure of bare breasted Columbia? wielding spear, topped with Liberty cap, and U.S. flag, and shield. Her helmet is topped with eagle. Decent VF+ \$277.

1864-L 86/86 FS-2306 NGC Abt Unc, damaged (few tiny rev digs) \$197.

1866 Good 4 \$39.

1869 Good 6 sm obv scrs \$47. Fine, slightly rough surfaces \$87.

1871 Good 6 \$77. G, big obv scrs \$17.

1872 Good+ rim damage \$57. Nice G+ \$127.

1874 VG \$17.

1877 ICG AG3 \$497.

1878 VF clnd red \$87.



100%

1882 NGC MS 66 brown (20% red) \$677.
1884 NGC MS 64 RB way PQ \$247.



100%

1906 or later, encased 1901 scratched cent as survivor of the great San Francisco earthquake and fire \$97.

1908-S fine \$107.

1909 Indians 3 piece lot of love tokens, "Teddy" and 2 hard to figure monograms. Coins nice AU all three for \$77.



100%

1909-S Indian NGC XF cleaned (too light a brown color) \$577.

1909-S Indian ICG VG 10 \$477.

Lot 100 cull Indians \$57.

Lot 100 Good to VG \$127.



100%

1909-P VDB Lincoln cent PCGS MS 66 \$297.



100%

1909-S VDB NGC VF, cleaned (gently to light brown color) \$977.

1909-S Lincoln, all NGC: VF30 \$187. VF25 \$177. VF20 \$167. F15 \$137. VG10 \$127. G4 \$107.

1911-S nice brown G+ \$37. Fine \$47. Filler \$27.

1912-D ICG AU 58 PQ \$117.

1912-S Abt Unc rare heavy green patina \$19.

1914-D NGC G4 \$187. ICG G6 \$187.

1922-D SEGS AU 55 \$97. Raw ch brn VG10 \$22. VF \$29.

1924-D G/AG \$27.

1931-S NGC XF 45 \$147. XF 40PQ \$147.



100%

1934-P nice double struck AU 58 or better, some red \$77.

1943-S steelie PCGS MS 67 (I have seen 69 holdered coins worse than this) \$277.

1948-S NGC MS 67 RD \$147.

1948-D round encased advertising for Iron City Beer Unc \$29.

1955-P doubled die Key variety NGC UNC (perhaps dipped at some time) nice MS 65 red brown look to me \$3277.

1955-D NGC MS 66 red \$17.

Two Cent Pieces

1864 small motto Good obv field scr \$97.

1864 lg motto pleasing VF 20 \$25.

Three Cents Silver

1851-O VF 20, old faint clng \$70

1852-P orig VF nice look \$57.

1854-P orig F, weak rev rim \$29.

1856-P VF uneven strike \$37.

1858-P VF faint bend \$39.

1862-P orig EF++ faint bend \$47.



100%

1873 closed 3 NGC PRF 63 deep violet blue gray toning PQ \$1877. PCGS PRF 63 deep blue gray toning PQ \$1877.

Three Cents Nickels



100%

(1865-1889) no date reverse brockage, pleasing VF \$4700.

1889 VF cleaned \$137.

Silver Half Dimes

1833 V-5 orig undipped EF 45 \$157.

1834 LM-2 Fine, clnd \$47.

1837 seated no stars, sm dt, VF 35, old clng, colorful retoning, rev faint scr \$127.

1842-P orig EF 40, heavy rev die breaks \$97.

1861-P VF+ \$29.

1862-P EF \$47.

Nickel Five Cents

1866 rays nice F 15+ \$59. EF clnd \$67.

1871 shield nickel NGC Proof 64 PQ (bright with no spots or streaks) \$697.

1875 EF40, lty clnd \$107.

1883 no cents orig AU 55+

1886 full rim good, very light scrs \$147.

1909-P orig EF40 \$27.

1911-P orig undipped MS 63 \$127.

V or Liberty Nickels AG to G+ roll of 40 for \$337.

1913-D type 1 ch orig undipped EF 45+ \$37.



100%

1913-D type two ch AU 58 or better \$217. Another Fine 15 or better \$147.

1924-D 2/3 horn \$37.

1927-S 2/3 horn \$17.



100%

No date off center, diagnostic die defect on eyebrow, AU 58 or better \$477.

Roll of 40 Buffalos, no dates \$7., partial dates \$9.75 full dates \$19.77

1938-D buffalo PCGS MS 66PQ strike, blast, delicate toning \$97.

1945-P rev double die nice net VG10 \$17.

Dimes



100%

1829 JR-7 NGC MS 61 PQ \$1677.

1837-P seated sm date G/AG \$19.



100%

1866-P PCGS Prf 64Cam white \$1177.

1874-P net F12 \$22.

1896-S NGC Fine cleaned (looks VG 10 to me) \$117.

1905-O nice orig F12 \$37

1908-O nice orig VF 30 \$67

1911-D NGC MS 63 PQ med gray toning \$277. ch orig EF 45++ \$47.



100%

1912-P NGC Proof 66 ch orig PQ CAC \$2177.

Lot of 50 Barber dimes Fair to Fine \$177.

1916-D Mercury ICG AG3 pleasing \$577.

1921-P Fair \$22. AG3 \$35 G \$57.

1921-D NGC VG8 \$107. Raw pleasing AG3 \$47. Fair \$29.



100%

1939-D all white NGC: MS 67 \$57. MS 66FB \$67. MS66 \$39.

1949-S NGC MS 66 \$77.

Twenty Cent Pieces

1875-CC Twenty cent pieces NGC AU 58 PQ \$2477 ANACS AU 50 Cleaned (very gently, PQ) \$1677. Raw VG \$337.

1875-S raw G/AG \$87. Orig net G4 \$87. VG orig \$117. Decent net F12 \$137. EF clnd \$197. EF whizzed \$127.

1875-P Fine, old lt clng, few h-l scrs, \$277.

1877-P raw ch orig AU 58 superb toning \$877. VG clnd \$227. EF obv and rev field scrs \$277.

Quarters



100%

1806 B-3 ICG G4, repaired (edge mount spots show) \$167.

Jonathan K. Kern Co.

March 19, 2012



1834 B-4 NGC AU 55 PQ superbr orig light gray toned \$877. B-4 raw ch orig G4 \$57.



1837 B-1 ch orig F 12 interesting counter mark, uncertain origin \$187.

1853-P arrows & rays AU 50 \$227. VF 35 gently cld \$49

1861-P obv 5th star recut, rev: convex eye, open claws, Briggs rev C or E, faint extra period after O in DOL ch orig AU 58 very light toning \$677.

1869-S AG/Fair \$19

1892-O orig VF 25 \$77.

1900-O F12 lty cld \$47.

1902-S F12, cld \$37.

1906-D EF40 whizzed \$27.

1907-O orig F12 \$17.

Lot of 40 Barber quarters Fair to Fine \$379.

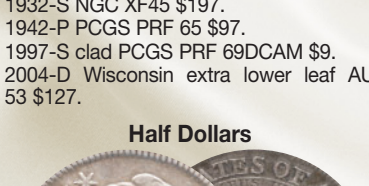
1917-P type 1 orig undipped AU 58 \$177. AU lightly cld \$117. ho rig F15+ \$59. Orig AG3 \$9.

1917-D Type 1 NGC XF 40 \$170.

1924-P orig VF 20 \$35.

1927-S VG, cld \$37.

1932-P nice AU 58 \$17 MS 63 \$47



1932-S NGC XF45 \$197.

1942-P PCGS PRF 65 \$97.

1997-S clad PCGS PRF 69DCAM \$9.

2004-D Wisconsin extra lower leaf AU 53 \$127.

Half Dollars



1809 O-105 raw EF usual very uneven strike \$197.

1810 O-106A ch orig EF \$477.

1810 O-106 NGC XF 40 \$427.

1812 O-103 AU details, cld, retoned, tiny hidden scrs \$147. O-104 nice AU 58 very faint cld \$477.

1829 O-112 ICG VF 20 nice orig look \$127.

1832 O-106 nice look net VF 20 \$87.

1838-P pleasing AG 3 \$37.



1843-O AU 58 Found in 1940 in a hoard of mostly gold in an old house at the corner of George & John Streets, Cincinnati, Ohio \$577.

1847-P nice orig net EF 45 light toning \$177.

1847-O orig F12 \$42



1851-P very rare, most melted as silver was underpriced compared to huge influx of gold. ch orig AU 58 \$2277.

1853-P arrows & rays NGC XF (environ damage dark field toning) \$197.

1857-P nice orig AU 50 \$177.

1858-P nice orig VG \$37.

1860-O very pleasing Good 6 \$37.

1861-P ch orig AU 50 rev Gem toning \$337. VF35 cld \$57.

1863-P nice net G+ \$37

1872-P ch orig Good 6 \$39. Nice orig Fair 2 \$17.

1872-CC very pleasing Fair 2 \$57.

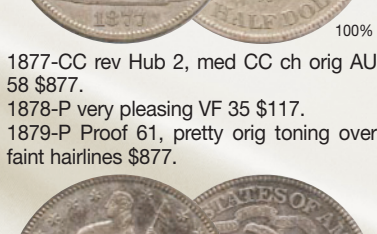
1873-P cl 3, na, nice AG3 \$22.

1873-P lg arrows ch orig Good+ \$37.

1874-P lg arrows, nice orig Good 6 \$34.

1875-P ICG AU 55 ch orig deep toning \$197.

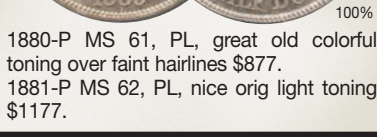
1877-S WB-104 ch orig AU 50+ \$197.



1877-CC rev Hub 2, med CC ch orig AU 58 \$877.

1878-P very pleasing VF 35 \$117.

1879-P Proof 61, pretty orig toning over faint hairlines \$877.



1880-P MS 61, PL, great old colorful toning over faint hairlines \$877.

1881-P MS 62, PL, nice orig light toning \$1177.

1883-P Abt Unc 58 PL with pretty orig toning \$877.
 1885-P EF45+ nice lt toning over old faint clng \$677.
 1892-O orig VG 8 soft strike at date \$377.
 1893-O ch orig VG 10+ \$67.
 1894-S VG, old clng \$19.
 1895-O nice orig VF 20 \$167.



1896-O orig VF 30 choice delicate toning \$447.

1896-S VG8 rim bump \$97.

1897-P orig EF 40 \$167.

1897-S NGC AG3 \$87.

1898-P ch orig AU 55 never dipped \$377.

1899-P ch orig never dipped MS 60 \$447.

1899-O VF 30+ \$147.

1903-P nice orig VG 8 \$24.

1904-O decent orig VG 8 \$29.

1905-O VG lt obv rim bump \$34.

1906-P ch orig never dipped MS 63 \$775.

1907-O nice orig VG 8 \$24.

1908-D nice orig VG 8 \$24.

1909-P ch orig VF 25 or better \$127.

1911-D nice orig F 12 \$39.

1912-D orig VF 20 faint obv cheek scr \$59.

1913-S ch orig F 12 or better \$77.

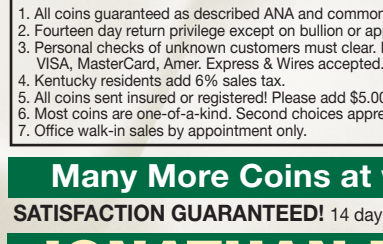
1915-P Barber half solid nice orig G-6+ \$117.

Lot of 20 Barber halves fair to VG+ \$377.

1916-P decent net G4 \$32. Fine rim damage \$32. Orig, stained EF 40 \$137.

1916-D decent G+ \$42.

1916-S VG scr, rim damage \$57.



1917-D obv mm, ch orig AU 58 very faint toning \$507.

1920-P EF 45+ hazy gray undipped \$97.

1921-P pleasing fair 21 readable \$77. NGC AG3 \$137.

1921-D pleasing orig G-6 or better \$287.

1938-D VF 20 faint cld \$87. Orig Fine \$87.

1943-D NGC MS 67 (Br-5205, looks like 3/3 repunched date to me) \$1775.

1944-P NGC MS 64 white PQ \$87.
 1946-P NGC MS 64 white PQ \$87.
 1957-P PCGS MS 64 \$27
 1958-P PCGS MS 64 \$27
 1958-D PCGS MS 64 \$21
 1960-P PCGS MS 64 \$21
 1961-P PCGS MS 64 \$21
 1961-D PCGS MS 64 \$22
 1962-P PCGS MS 64 \$21
 1962-P NGC PRF 65 CAM \$27
 1962-D PCGS MS 64 \$21
 1963-P PCGS MS 64 \$21
 1963-D PCGS MS 66 FBL \$775. PCGS MS 64 \$21
 1968-S NGC PF 66CAM \$12
 1969-S PCGS PF 68DCAM \$37
 1971-S NGC PF 68CAM \$37
 1987-S PCGS PR 69DCAM \$12
 1989-S PCGS PR 69DCAM \$12
 1991-S PCGS PR 69DCAM \$19
 1995-S silver PCGS PR 69DCAM \$67
 2003-S silver PCGS PR 69DCAM \$22

Commemorative Halves

1893-P Columbian Expo ch orig undipped AU 58 \$19.



1921 Missouri 2*4 commem half NGC MS 64 nice white PQ \$1877.

1925-P Stone Mt nice orig VF 20 \$37. Gently cld EF or better \$44. Orig Unc spots \$49. NGC MS 65 \$237.

1925-P Lexington Concord PCGS MS 65 white \$457.

1925-S Cal Jubilee PCGS MS 64 blazing PQ white \$497.

1926-P Oregon nice orig EF \$117.

1934-P Maryland PCGS MS 65 \$247.

1935-P Hudson NGC MS 65 \$1277.

1936-P Robinson NGC MS 63 \$172.

1936-P Wisconsin NGC MS 66 \$347.

1936-P York NGC MS 66 \$307.

1937-P Roanoke NGC MS 65 \$247.

1938-D Arkansas NGC MS 63 \$247.

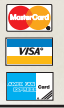
1938-S Arkansas NGC MS 63 \$247.

1946-P Iowa nice orig AU 58 or better \$87.

**BUYING GOLD, SILVER,
 All Collectible Coins –
 Please Offer**

MAIL ORDER POLICIES

1. All coins guaranteed as described ANA and common sense grading. Your satisfaction guaranteed!
2. Fourteen day return privilege except on bullion or approval service can be arranged with proper references.
3. Personal checks of unknown customers must clear. References may be required.
 VISA, MasterCard, Amer. Express & Wires accepted. Bullion items check or wire only.
4. Kentucky residents add 6% sales tax.
5. All coins sent insured or registered! Please add \$5.00 for postage and handling.
6. Most coins are one-of-a-kind. Second choices appreciated.
7. Office walk-in sales by appointment only.



Many More Coins at www.jkerncoins.com

SATISFACTION GUARANTEED! 14 day return privilege. Checks, wires, Visa, MC, AX.

JONATHAN K. KERN CO.

441 S. Ashland Ave., Lexington, Kentucky 40502
 To order, call 859-269-1614 between 9 AM & 5 PM EST

(Visits by appointment)
 Professional Numismatist • Bachelor of Arts in Numismatics

24-hour FAX only: (859) 266-7900

Email: jon@jkerncoins.com

